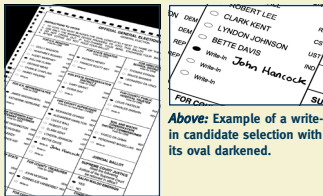


1,2,3, **VOTE!**

Digital Scan Voting With the ES&S intElect DS200

1 MARK BALLOT

For every contest, make the selection of your choice with the approved marking device provided. It is very important that you mark your ballot properly, please see instructions on the other side. For write-in candidates, fill in the oval next to the words **“WRITE IN”** and write the candidate's name on the line.



Above: Example of a write-in candidate selection with its oval darkened.

2 INSERT BALLOT

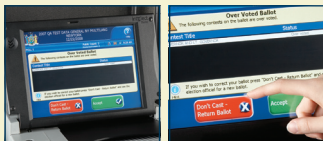
If multiple languages are offered, select the language of your choice.

Insert your ballot into the ballot acceptor. The intElect DS200 will accept ballots in any orientation (backward, upside down, etc.).



3 REVIEW BALLOT

Check the display screen to see whether there are any issues with the ballot such as overvoting, undervoting, and blank ballots. Press **“DON'T CAST — RETURN BALLOT”** on the touch screen to get the ballot back to make changes, or press **“ACCEPT”** to submit your ballot as-is. To complete the process and cast your ballot, press the **“CAST BALLOT”** button.



Election Systems
& Software

MAINTAINING VOTER CONFIDENCE.
ENHANCING THE VOTING EXPERIENCE.

www.essvote.com

1,2,3, VOTE! CARD FOR VOTERS

ES&S INTELECT DS200 DIGITAL SCAN BALLOT COUNTER



FEATURES AND BENEFITS OF THE ES&S INTELECT DS200

The ES&S intElect DS200 offers the latest secure technology in digital scan ballot tabulation that's reliable and easy to use. Simply insert your ballot, and your votes are recorded!



✓ **BALLOT INTEGRITY**

The DS200 alerts you to overvoted races and undervoted ballots and gives you the opportunity to have your ballot returned so that you can make changes.

✓ **SECURITY AND RELIABILITY**

A rugged stainless steel chassis, independent ballot containers, and other unique features make the DS200 one of the most secure and reliable in the industry.

✓ **AUDITABLE PAPER TRAIL**

The DS200 retains your ballot in a secure, locked container for verification in the event of a recount.

✓ **TESTED, CERTIFIED, PROVEN**

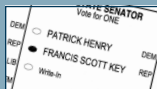
The DS200 has been fully tested by an independent testing authority, certified to meet or exceed the rigorous standards of the federal government, and proven through the use in thousands of actual elections worldwide.

SPECIAL FEATURE: HOW TO MARK A BALLOT CORRECTLY.

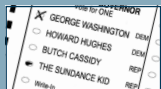
It is important that you mark your ballot properly before inserting it into the ES&S intElect DS200 Digital Scan Ballot Counter to ensure that your vote choices are counted correctly.

- ✓ Mark your ballot by completely darkening the oval next to your choice. Do not use an "X" or other notation, it will not be read by the DS200.
- ✓ Use only the approved marking device provided by election officials or found in the voting booth.
- ✓ If you make a mistake in marking your ballot, please ask the election officials for a replacement ballot.

- ✓ Do not fold your ballot before inserting it into the ballot acceptor.
- ✓ If you have any questions regarding your ballot, please ask an election official for clarification before depositing your ballot into the DS200.



Correctly marked oval



Incorrectly marked ovals

MAINTAINING VOTER CONFIDENCE.

ENHANCING THE VOTING EXPERIENCE.